

Canal impeller



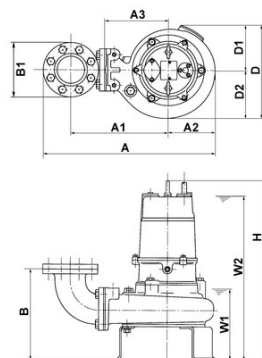
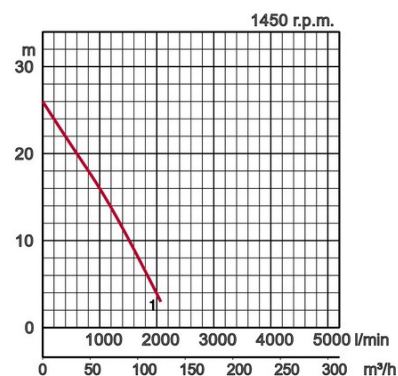
B 3-phase
50Hz

Specifications:

Model		Colour code curve	Dry weight kg without cable	
free standing	with guide rail fitting		free standing	with guide rail fitting
100B45.5	TOS100B45.5	● 1		



Discharge bore mm		100mm		
Pumping Fluid	Temperature	0-40°C		
	Type of Fluid	Municipal sewage		
Pump	Components	Impeller	Non-clog impeller	
		Shaft Seal	Double mechanical seal	
		Bearings	Shielded ball bearings	
	Material	Impeller	Grey iron casting EN-GJL-200	
		Casing	Grey iron casting EN-GJL-200	
		Suction Plate	Grey iron casting EN-GJL-200	
	Shaft Seal	Silicon carbide in oil bath		
Motor	Type, Poles		Induction motor, 4 poles, IP68	
	Lubrication		Turbine oil (ISO VG32)	
	Insulation		Insulation class F	
	Motor Protector (built-in)		Circle thermal cut-out	
	Phase / Voltage		3-phase / 400V / 50Hz / d.o.l.	
	Material	Casing	Grey iron casting EN-GJL-200	
		Shaft	Stainless steel EN-X30Cr13	
Cable		Rubber, 10m H07RN-F		
Discharge Connection		Inside thread, JIS10K flange		
Optional Accessories		Guide rail fitting "TOS" (guide support, duck foot bend, lifting chain) / Bend and stand set for free standing types		



Model	A	A1	A2	A3	B	B1	D	D1	D2	H	W1	W2
100B45.5	687	388	194	260	372	210	400	197	203	824	335	700

W1: lowest running water level

Updated 09/2017

Please mind: discharge bend, duck foot bend and stand set are accessories and must be ordered separately