

Canal impeller



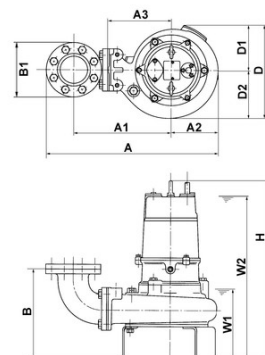
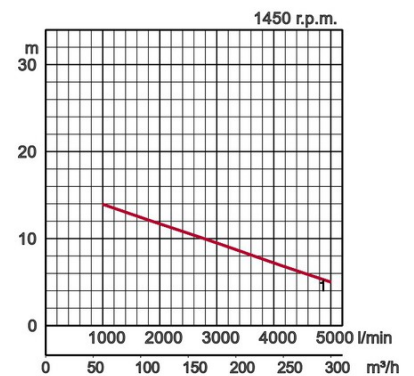
B 3-phase
50Hz

Specifications:

Model		Colour code curve	Dry weight kg without cable	
free standing	with guide rail fitting		free standing	with guide rail fitting
150B47.5L	TOS150B47.5L	● 1		



Discharge bore mm		150mm	
Pumping Fluid	Temperature	0-40°C	
	Type of Fluid	Municipal sewage	
Pump	Components	Impeller	Non-clog impeller
		Shaft Seal	Double mechanical seal
		Bearings	Shielded ball bearings
	Material	Impeller	Grey iron casting EN-GJL-200
		Casing	Grey iron casting EN-GJL-200
		Suction Plate	Grey iron casting EN-GJL-200
	Shaft Seal	Silicon carbide in oil bath	
Motor	Type, Poles		Induction motor, 4 poles, IP68
	Lubrication		Turbine oil (ISO VG32)
	Insulation		Insulation class F
	Motor Protector (built-in)		Circle thermal cut-out
	Phase / Voltage		3-phase / 400V / 50Hz / d.o.l.
	Material	Casing	Grey iron casting EN-GJL-200
Shaft		Stainless steel EN-X30Cr13	
Cable		Rubber, 10m H07RN-F	
Discharge Connection		Inside thread, JIS10K flange	
Optional Accessories			



Model	A	A1	A2	A3	B	B1	D	D1	D2	H	W1	W2
150B47.5L	871	503	228	320	515	280	486	232	254	1085	450	955

W1: lowest running water level

Updated 09/2017

Please mind: discharge bend, duck foot bend and stand set are accessories and must be ordered separately