

Vortex impeller



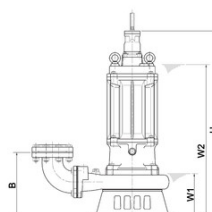
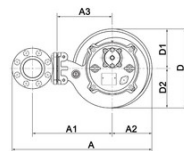
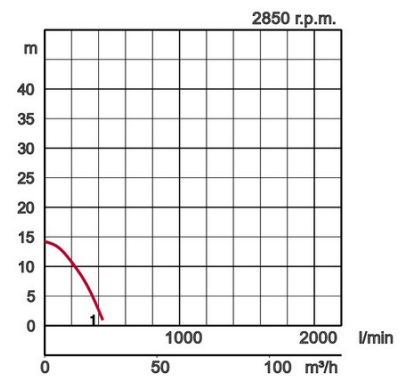
SFQ 3-phase
50Hz

Specifications:

Model		Colour code curve	Dry weight kg without cable	
free standing	with guide rail fitting		free standing	with guide rail fitting
50SFQ2.75	-	1		



Discharge bore mm		50mm	
Pumping Fluid	Temperature	0-40°C	
	Type of Fluid	Aggressive sewage	
Pump	Components	Impeller	Open type impeller
		Shaft Seal	Double mechanical seal
		Bearings	Shielded ball bearings
	Material	Impeller	Stainless steel casting DIN GX5CrNiMo19-11-2
		Casing	Stainless steel casting DIN GX5CrNiMo19-11-2
		Suction Plate	Stainless steel casting DIN GX5CrNiMo19-11-2
	Shaft Seal	Silicon carbide in oil bath	
Motor	Type, Poles		Induction motor, 2 poles, IP68
	Lubrication		Turbine oil (ISO VG32)
	Insulation		Insulation class E
	Motor Protector (built-in)		Circle thermal cut-out
	Phase / Voltage		3-phase / 400V / 50Hz / d.o.l.
	Material	Casing	Stainless steel casting DIN GX5CrNiMo19-11-2
Shaft		Stainless steel EN-X5CrNiMo17-12-2	
Cable		Rubber, 10m H07RN-F	
Discharge Connection		Inside thread, JIS10K flange	



Model	A	A1	A2	B	D	D1	D2	H	W1	W2
50SFQ2.75	252	120	98	108	196	98	98	397	90	355

W1: lowest running water level