

Canal impeller



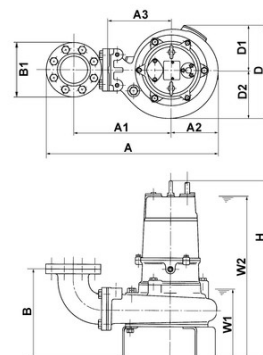
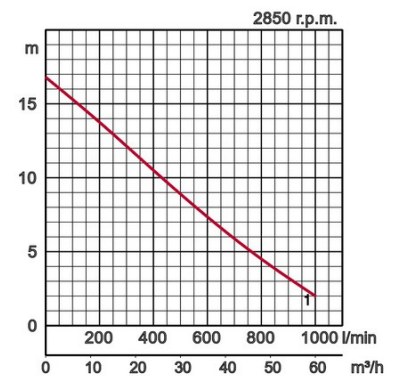
B 3-phase
50Hz

Specifications:

Model		Colour code curve	Dry weight kg without cable	
free standing	with guide rail fitting		free standing	with guide rail fitting
80B21.5	TOS80B21.5	● 1		



ø Discharge bore mm		80mm		
Pumping Fluid	Temperature	0-40°C		
	Type of Fluid	Municipal sewage		
Pump	Components	Impeller	Non-clog impeller	
		Shaft Seal	Double mechanical seal	
		Bearings	Shielded ball bearings	
	Material	Impeller	Grey iron casting EN-GJL-200	
		Casing	Grey iron casting EN-GJL-200	
		Suction Plate	Grey iron casting EN-GJL-200	
	Shaft Seal	Silicon carbide in oil bath		
Motor	Type, Poles		Induction motor, 2 poles, IP68	
	Lubrication		Turbine oil (ISO VG32)	
	Insulation		Insulation class F	
	Motor Protector (built-in)		Circle thermal cut-out	
	Phase / Voltage		3-phase / 400V / 50Hz / d.o.l.	
	Material	Casing	Grey iron casting EN-GJL-150	
Shaft		Stainless steel EN-X6Cr13		
Cable		Rubber, 10m H07RN-F		
Discharge Connection		Inside thread, JIS10K flange		
Optional Accessories		Guide rail fitting "TOS" (guide support, duck foot bend, lifting chain) / Bend and stand set for free standing types		



Model	A	A1	A2	A3	B	B1	D	D1	D2	H	W1	W2
80B21.5	446	267	125	165	234	185	250	125	125	536	190	465

W1: lowest running water level

Updated 07/2017

Please mind: discharge bend, duck foot bend and stand set are accessories and must be ordered separately