

# Vortex impeller



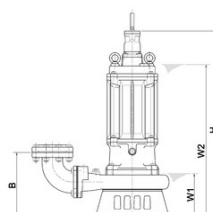
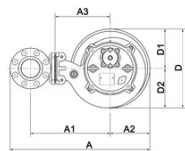
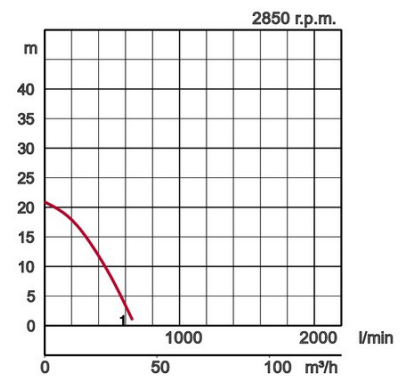
**SFQ** 3-phase  
50Hz

## Specifications:

Model		Colour code curve	Bore mm	Power output kW	Phases	r.p.m.	Head max. m	Capacity max. l/min	Starting method	Dry weight kg without cable		Impeller passage mm
free standing	with guide rail fitting									free standing	with guide rail fitting	
80SFQ21.5	-	1	80	1,5	3	2850	20,9	645	direct	36,0	-	6



ø Discharge bore mm		80mm		
Pumping Fluid	Temperature	0-40°C		
	Type of Fluid	Aggressive sewage		
Pump	Components	Impeller	Open type impeller	
		Shaft Seal	Double mechanical seal	
		Bearings	Shielded ball bearings	
	Material	Impeller	Stainless steel casting DIN GX5CrNiMo19-11-2	
		Casing	Stainless steel casting DIN GX5CrNiMo19-11-2	
		Suction Plate	Stainless steel casting DIN GX5CrNiMo19-11-2	
	Shaft Seal	Silicon carbide in oil bath		
Motor	Type, Poles		Induction motor, 2 poles, IP68	
	Lubrication		Turbine oil (ISO VG32)	
	Insulation		Insulation class F	
	Motor Protector (built-in)		Circle thermal cut-out	
	Phase / Voltage		3-phase / 400V / 50Hz / d.o.l.	
	Material	Casing	Stainless steel casting DIN GX5CrNiMo19-11-2	
Shaft		Stainless steel EN-X5CrNiMo17-12-2		
Cable		Rubber, 10m H07RN-F		
Discharge Connection		Inside thread, JIS10K flange		



Model	A	A1	A2	B	D	D1	D2	H	W1	W2
80SFQ21.5	329	165	110	109	221	110	111	484	95	415

W1: lowest running water level

Updated 01/2018

Please mind: discharge bend, duck foot bend and stand set are accessories and must be ordered separately